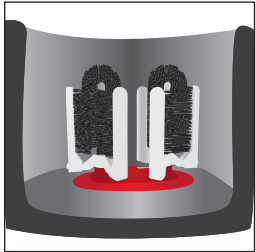
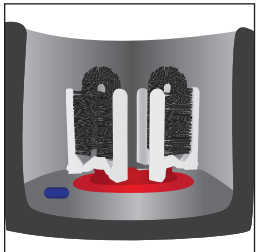


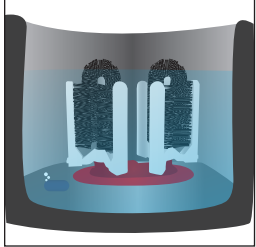
Beer Glass Cleaning Instructions



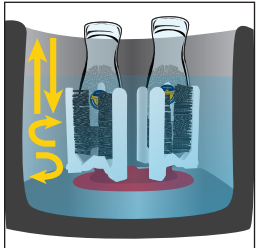
1. Place brushes into clean sink.



2. Drop in one blue tablet from your BetterBeer.com Beer Glass Cleaner container.



3. Fill 3/4 full with hot water.



4. Scrub each glass on brush. Fully rotate & scrub.



4. Place glasses into glass washer to sanitize.

Better Beer starts with a *Beer Clean Glass*



Beer Clean Glass

- Dime sized head
- Lasts for whole pint
- Properly balanced carbonation
- Won't go flat
- Leads to increased sales
- Increases profits & yields
- Tastes great!



“Near” Clean Glass

- Head is lost in 20 seconds = flat pints
- Carbonation sticks to film of grease inside glass. *Caused by: putting fingers, napkins, milk, or pop in beer glass.*
- Causes lost sales, profits, & tips.
- Clean weekly to avoid.

Only use brushes for cleaning beer glasses. Store brush in a clean & dry location. **Replacement brush stems & additional glass cleaner** available by visiting: BetterBeer.com/store

